

Physical Infrastructure

A robust, efficient network is the critical core of today's business operations. The Physical Infrastructure professionals at NWN Corporation have seen that how well your network runs is directly related to the health of your network cable plant. And with the rise in PoE (Power over Ethernet) devices on the network your current cable plant might not perform at its best. NWN Physical Infrastructure professionals can offer services to assess, design and install the physical infrastructure your business requires.

Assessment and Documentation: A detailed analysis of your fiber optic and copper cable plant is vital when deploying new technologies. With a site assessment you will know the condition and capabilities of your network infrastructure.

Unsure what the cables connect to? We can trace and document user locations and produce manageable documentation for moves, adds and changes.

Consulting: Current on the latest "best practice" methods for installation and design, NWN professionals can offer the best solutions on a new project. With our on-staff RCDD's, you can be assured quality and professionalism. Services include topology design, firestop solutions, grounding and bonding for telecommunications, communication room layouts and assistance with RFP's and RFQ's.

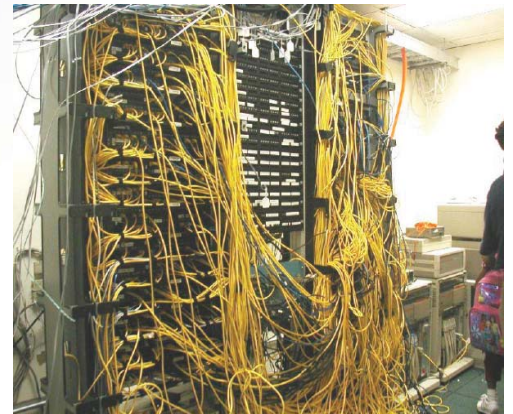
Data Center Design: NWN professionals can design your network-critical physical infrastructure. With expertise in power, cooling and connectivity, we can offer the best possible solutions for your data center.

Installation Services: These include the design and installation of fiber optic backbones, copper cable backbones, permanent link cabling and outside plant cabling (fiber and copper). All installations are "standards compliant" and are backed by our certifications and partnerships with leading equipment manufacturers.

Other Services:

- MAC Work (moves, adds and changes)
- Cable Certification and Troubleshooting
- Paging System Installations
- Maintenance Contract
- Live tracking and monitoring of physical connections from the patch panel

Closet Clean Up: We can help you turn this...



...into this!



For more information: Please visit www.NWNIT.com, email NWNinfo@NWNIT.com or contact your NWN Corporation Account Executive.

